

PRECISION SPINE
SHURFIT[®] 3D
TITANIUM INTERBODY CAGES

ENHANCED STRENGTH AND POROSITY

The ShurFit[®] 3D Titanium Interbody Cage offers a highly porous construct with open windows, making it an outstanding solution for enhanced visualization.

The internal architecture consists of a highly engineered 3D interconnected titanium lattice structure with unique built-in struts that are designed to provide the right balance of strength and stiffness to help minimize stress shielding and subsidence.



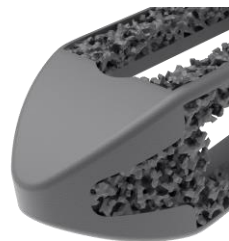
INTERNAL STRUTS



POSITION MARKER



BULLETED LEADING EDGE



SHURFIT® 3D TITANIUM INTERBODY CAGE



3D Ti Structure with Interconnected Lattice that reduces risk of migration

- Pore Size Range: 100 - 800µm
- Average Pore Size: 600µm

Open Windows, Coupled with Reduced Density (~60% porosity), enhances intraoperative imaging and fusion assessment

Lattice Structure decreases cage stiffness, minimizing stress-shielding and enhancing the fusion process

Internal Struts increase overall support and allows for insert and rotate cage positioning

Position Marker ensures correct anatomical placement

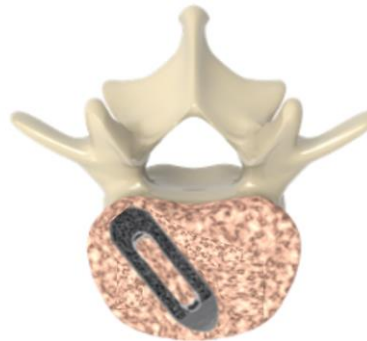
Bulleted Leading Edge allows for ease of insertion

Multiple Lordotic Options accommodate varying patient anatomies



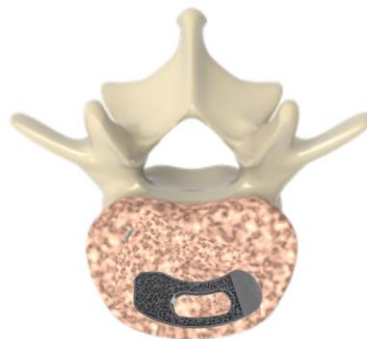
PLIF Interbody Straight Cage

Length: 24mm
Width: 9mm
Lordosis: 0°, 6° & 12°
Heights: 8-14mm (1mm)*



TLIF Interbody Straight Cage

Length: 26, 28mm
Width: 9mm
Lordosis: 0°, 6° & 12°
Heights: 8-14mm (1mm)*



TLIF Interbody Curved Cage

Length: 24, 28 & 32mm
Width: 9mm
Lordosis: 0°, 6° & 12°
Heights: 7-14mm (1mm)*



Passive 3 Stage Articulating & Steerable Inserter allows for ease of insertion and proper cage positioning



*Varies per lordosis

Precision Spine, Inc.

2050 Executive Drive, Pearl, MS 39208
Customer Service: 1.888.241.4773
Phone: 601.420.4244
Toll Free: 877.780.4370
Fax: 601.420.5501
www.precisionspineinc.com

